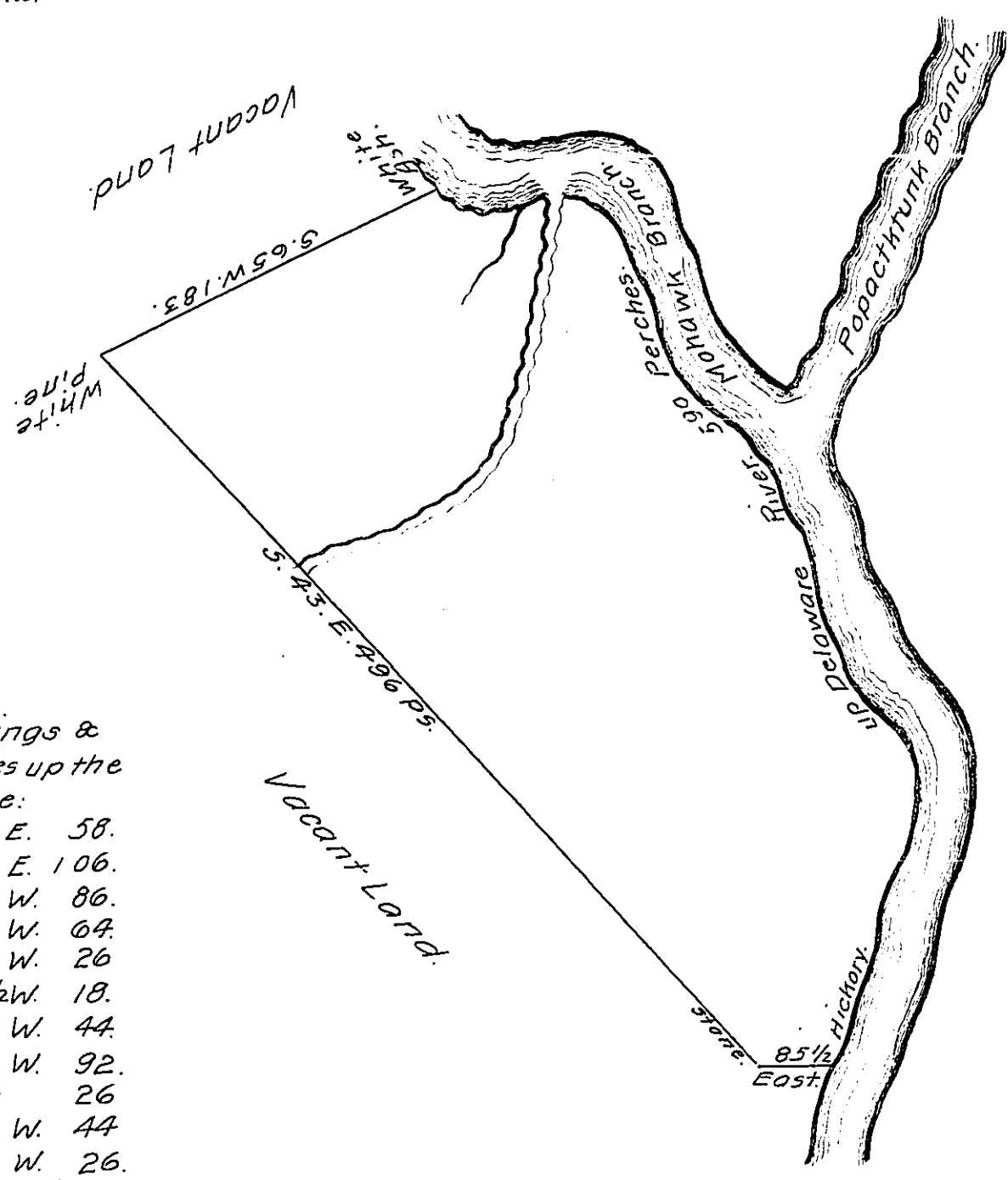


(Copy only)

Sec D-80-227



- Bearings & Distances up the River are:
- N. 20. E. 58.
 - N. 15. E. 106.
 - N. 39. W. 86.
 - N. 17. W. 64.
 - N. 25. W. 26
 - N. 36 1/2 W. 18.
 - N. 53 W. 44.
 - N. 21 W. 92.
 - West 26
 - S. 81. W. 44
 - N. 63. W. 26.
- 590.

By Virtue of a warrant Dated the 16th December, 1763. Surveyed the 29th & 30th of May, 1775 to the Honourable the Proprietaries of Pennsylvania the above Described tract of Land (in part of their tenth.) Situate on the west side of Delaware River at a place called Shohocking in Northampton County containing Five hundred and twenty Acres and the Allowance of six & cent. & c.

To John Lukens, Esqr, }
Surveyor General.

& Geo. Palmer, D.S.

IN TESTIMONY that the above is a copy of the original remaining on file in the Department of Internal Affairs of Pennsylvania, made conformably to an Act of Assembly approved the 16th day of February, 1833, I have hereunto set my Hand and caused the Seal of said Department to be affixed at Harrisburg, this eleventh day of May, 1910.

Nancy Howell
Secretary of Internal Affairs.